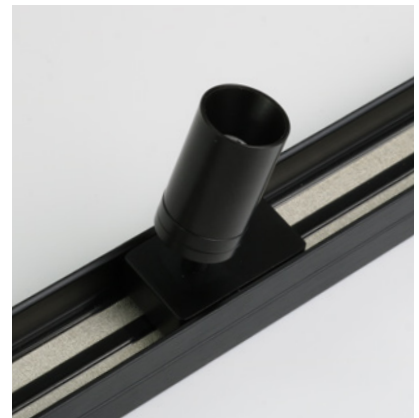


MAG Spot 1-H

Fixture Guide

MAGNETO Track System | Indoor | Surface | Output up to 52.65lm/module

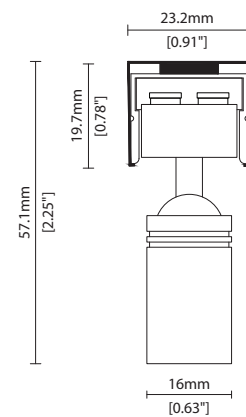


Key applications

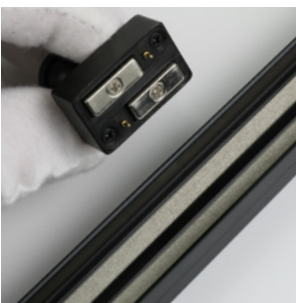
- ✓ Cabinet & furniture
- ✓ Ceiling
- ✓ Direct lighting
- ✓ Display case
- ✓ Interior
- ✓ Retail display
- ✓ Shelving display

Key features

- ✓ Adjustable
- ✓ Constant Voltage (CV)
- ✓ Diffusion: spoting
- ✓ Glare control options
- ✓ High lumen efficacy
- ✓ IP40 dry area
- ✓ Lens options



MOUNTING METHOD – MAGNETO Track System



Magnetic track attachment



KKCK-02 MAGNETO Track Clip

MAG Spot 1-H

Specification sheet

KKDÖ



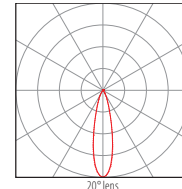
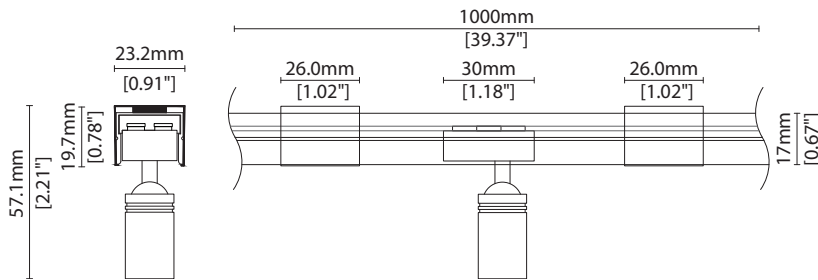
Dimensions	H50.5/Ø16 (H1.99/Ø0.63 in)
Chip	h-line
Cover/Optics	20°/30°/40°
CCT	h-line: 2700K/3000K/3500K/4000K/5000K
LED binning	h-line: 3-step MacAdam ellipse
CRI	≥ 90
Lifetime	50,000 hours @ 25°C (50,000 hours @ 77°F)
Operating temp	T _a = -20 to 50°C (T _c max = 60°C) T _a = -4 to 122°F (T _c max = 140°F)
IP Rating	IP40
Finish	Black
Mounting	Magnetic Track/Clip Mounted
Power feed	Hardwire tail 1000mm (39.37in)
Control	0-10V/1-10V/DMX/DALI



Power consumption	Supply voltage	Supply current
1.5W	24V DC	0.063A

Performance Data (3000K)

h-line	R1	R2	R3	R4	R5	R6	R7	R8	R9	R10	R11	R12	R13	R14	R15				
	95.9	97.1	99.1	96.9	96.1	94.1	97.0	98	98.6	95.4	94.1	84.8	95.6	98.3	97.0				
	20°															CRI	R9	Rf	Rg
h-line	52.65lm/module 35.1lm/W															97.9	97.8	95	101



30° lens

— C0 / C180 cd / 1000 lm 40° lens
 C90 / C270

MAG Spot 1-H

Code Table



FIXTURE

Model	Finish	Cover/Lens	Grade	Colour (CCT)	IP	Cable length	Power feed	Optical	Control	Input
MAG Spot 1-H	M1H Black Anodised	BA No cover X	h- h	2700K 27 3000K 30 3500K 35 4000K 40 5000K 50	IP40 40	1000mm 1000 (39.37in)	Single no sheath tail S00X	20° 20 30° 30 40° 40	Switched (ON/OFF) 0	DC 24V g

Code Example:

M1H	-	BA	-	X	-	h	-	30	-	40	-	1000	-	S00X	-	40	-	0	-	g
MAG Spot 1-H		Black Anodised		No cover		h-		3000K		IP40		1000mm (39.37in)		Single no sheath tail		40°		Switched (ON/OFF)		DC 24V

ACCESSORIES

Mounting Accessories

KKTR-02-0500	MAGNETO Track Rail 500mm (19.69in)
KKTR-02-1000	MAGNETO Track Rail 1000mm (39.37in)
KKTR-02-1500	MAGNETO Track Rail 1500mm (59.06in)
KKTR-02-2000	MAGNETO Track Rail 2000mm (78.74in)
KKCK-02	MAGNETO Track Rail Fixed Clip bracket
KKCN-36	MAGNETO Track Rail Power Feed

PSU/Driver

0-10V/1-10V/DALI/DMX

* Refer to **Driver/PSU Options** page for details or provide requirement and KKDC to offer the suitable option

* Refer to **Mounting accessories** on **Accessories** pages

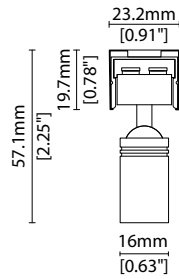
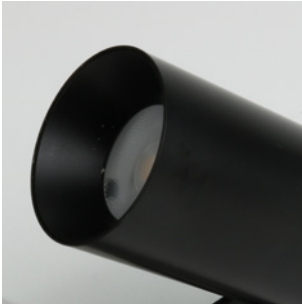
LED ENGINE VARIANTS (LED STRIP TYPE)

Luminaire	Lumen/module	W	Spec Doc	Dimension
MAG Spot 1	80.4	1.5	MAG Spot 1	H44/Ø16 (H1.73/Ø0.63 in)
MAG Spot 1-H	52.65	1.5	Mag Spot 1-H	H50.5/Ø16 (H1.99/Ø0.63 in)
MAG Spot 3	305	5	MAG Spot 3	H87.5/Ø33 (H3.44/Ø1.3 in)

* Performance data: h-line, 3000K, 40° lens

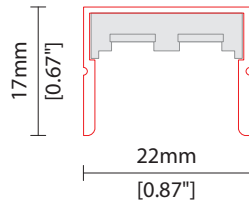
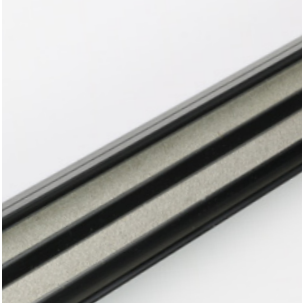
LENS OPTIONS

* Options are an integral part of the fixture ordering codes. Please refer to **Code Table** pages.



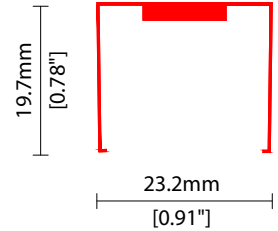
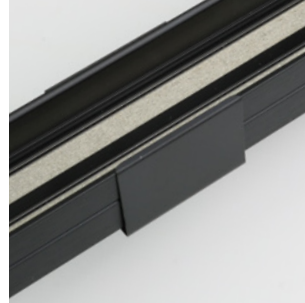
- 20 20° lens
- 30 30° lens
- 40 40° lens

MOUNTING ACCESSORIES



KKTR-02-0500	500mm (19.69in)
KKTR-02-1000	1000mm (39.37in)
KKTR-02-1500	1500mm (59.06in)
KKTR-02-2000	2000mm (78.74in)

MAGNETO Track Rail
Black Anodised finish
W22/H17mm (W0.87/H0.67in)



KKCK-02

MAGNETO Track Clip
Black Anodised finish
L26/W23.2/H19.7mm
(L1.02/W0.91/H0.78in)

POWER FEED



KKCN-36

MAGNETO Track power feed
1000mm (39.37in) tail
Black finish

AVAILABLE PSU OPTIONS

Control Mode	PSU (Order Code)	Input Voltage AC	Output Voltage DC	Rated Output Current	Rated Power	Dim %	IP Rating
Switched	CEN-60-24	90-295V	24V	2.5A	60W	-	IP67
	HLG-60H-24	90-305V	24V	2.5A	60W	-	IP67
	HLG-100H-24	90-305V	24V	4.0A	100W	-	IP67
	HLG-150H-24	90-305V	24V	6.3A	150W	-	IP67
	HLG-240H-24	90-305V	24V	10A	240W	-	IP67
0-10V (1-10V)	PWM-40-24	90-305V	24V	1.67A	40W	100-0.15 (100-10)	IP67
	PWM-60-24	90-305V	24V	2.5A	60W	100-0.15 (100-10)	IP67
	PWM-90-24	90-305V	24V	3.67A	90W	100-0.15 (100-10)	IP67
	PWM-120-24	90-305V	24V	5.0A	120W	100-0.15 (100-10)	IP67
DALI	LIN100A1	120-277V	24V	1A per channel	100W	100-0.1	IP66/IP40
DMX RGB	LIN100A1	120-277V	24V	1.33A per channel	100W	100-0.1	IP66/IP40
DMX RGBW	LIN100A1	120-277A	24V	1A per channel	100W	100-0.1	IP66/IP40

Flicker Free Options - Combination of PSU+ sub-controller

Control Mode	PSU (Order Code)	Sub-controller (Order Code)	Input Voltage AC	Output Voltage DC	Rated Output Current	Rated Power	Dim %	IP Rating PSU/ Sub-controller
0-10V or 1-10V	CEN-60-24	KKDM-06	90-295V	24V	2.5A	60W	100-0.9	IP67/IP20
	HLG-60H-24	KKDM-06	90-295V	24V	2.5A	60W	100-0.9	IP67/IP20
	HLG-100H-24	KKDM-06	90-295V	24V	4.0A	100W	100-0.9	IP67/IP20
	HLG-150H-24	KKDM-06	90-295V	24V	6.3A	150W	100-0.9	IP67/IP20
	HLG-240H-24	KKDM-06	90-295V	24V	10.0A	240W	100-0.9	IP67/IP20
DALI	CEN-60-24	KKDL-02/03/04/visDIM PRO 30	90-295V	24V	2.5A	60W	100-0.1	IP67/IP20
	HLG-60H-24	KKDL-02/03/04/visDIM PRO 30	90-305V	24V	2.5A	60W	100-0.1	IP67/IP20
	HLG-100H-24	KKDL-02/03/04/visDIM PRO 30	90-305V	24V	4.0A	100W	100-0.1	IP67/IP20
	HLG-150H-24	KKDL-02/03/04/visDIM PRO 30	90-305V	24V	6.3A	150W	100-0.1	IP67/IP20
	HLG-240H-24	KKDL-02/03/04/visDIM PRO 30	90-305V	24V	10.0A	240W	100-0.1	IP67/IP20
DMX RGB	CEN-60-24	KKSC-05	90-295V	24V	2.5A	60W	100-0.9	IP67/IP20
	HLG-60H-24	KKSC-05	90-305V	24V	2.5A	60W	100-0.9	IP67/IP20
	HLG-100H-24	KKSC-05	90-305V	24V	4A	100W	100-0.9	IP67/IP20
	HLG-150H-24	KKSC-05	90-305V	24V	6.3A	150W	100-0.9	IP67/IP20
	HLG-240H-24	KKSC-05	90-305V	24V	10.0A	240W	100-0.9	IP67/IP20

¹ The items shown above cover the most frequently used specification but does not exhaust the possible options

² PSU and/or driver can be chosen from the table, or KKDC may recommend the best option upon receipt of the controls requirement and installation environment

³ Electrical shop drawing will include detailed information of PSU and relevant control drivers

⁴ Cut sheets are available on the controls section of www.kkdc.lighting or upon request